

# HINGE

## PART #TL-100 WITH GREASE FITTING AXLE



### APPLICATIONS:

Steel hinges are used on all types of swinging doors on roll-off containers, etc.

### SPECIFICATIONS:

Dimension of Steel Grease Axle  
Thickness on Steel Plates  
Lubrication  
Finish  
Packing  
Weight

1 1/2" x 9"  
A and B - 5/8", C - 1/2"  
Zerk Fitting  
Raw, Packed in Light Oil  
100 Pieces Per Crate  
21 lbs

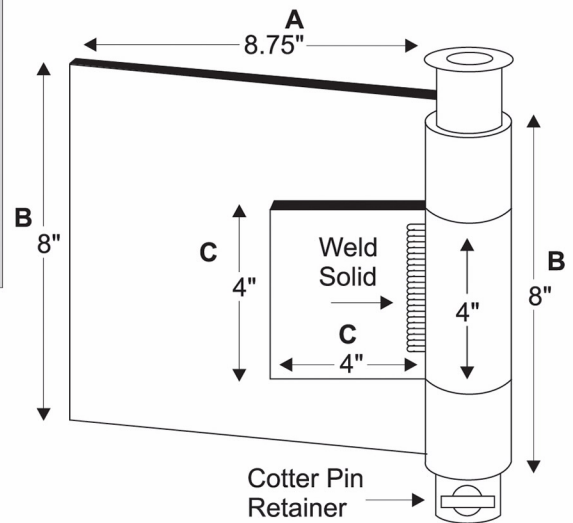
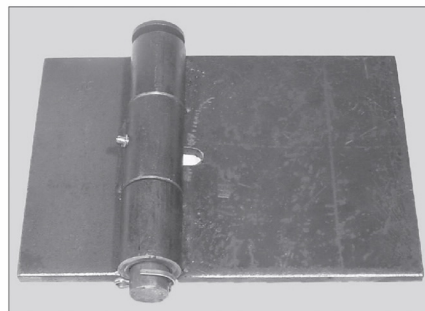


PLATE SIZE	
A	8 3/4"
B	8"
C	4" x 4"

# HINGE

## PART #TL-101 WITH GREASE FITTING AXLE



### APPLICATIONS:

Steel hinges are used on all types of swinging doors on roll-off containers, etc

### SPECIFICATIONS:

Dimension of Steel Grease Axle  
Thickness on Steel Plates  
Lubrication  
Finish  
Packing  
Weight

1 1/2" x 9"  
1/2"  
Zerk Fitting  
Raw, Packed in Light Oil  
100 Pieces Per Crate  
18 lbs.

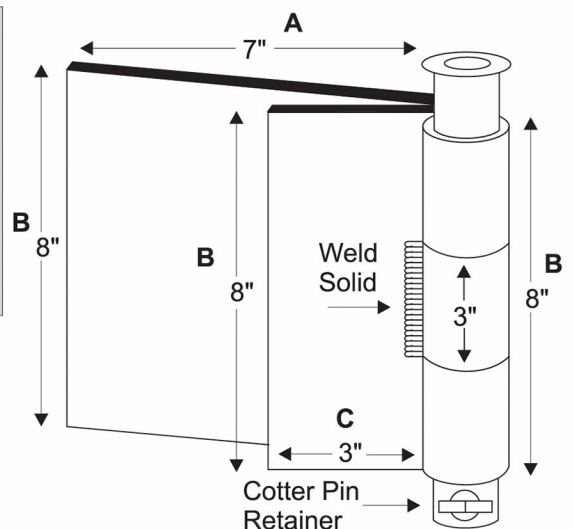


PLATE SIZE	
A	7"
B	8"
C	3"

