

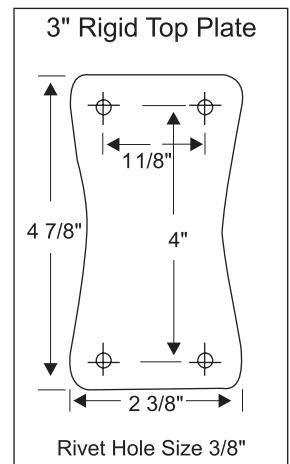
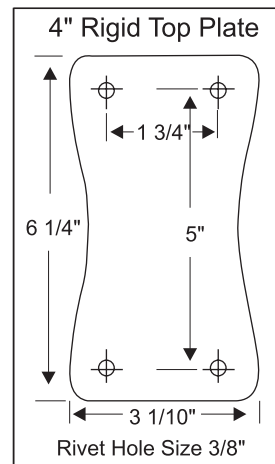
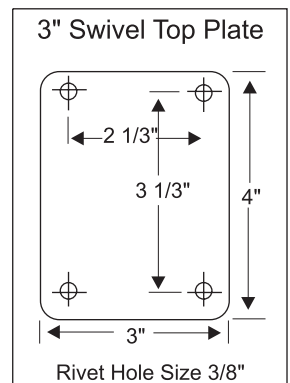
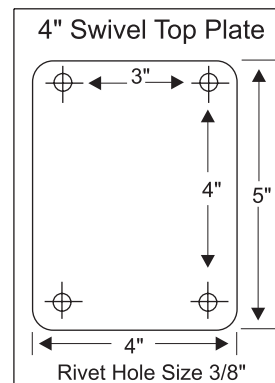
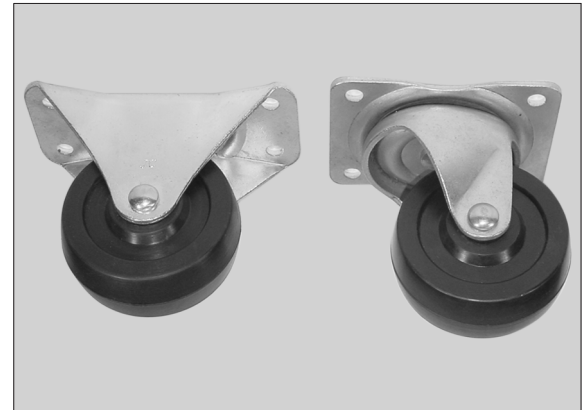
GENERAL DUTY HARD RUBBER CASTER

APPLICATIONS:

Hard rubber molded composition wheel. High impact resistant, good floor protection. Dollies, parts bins, portable storage racks, lighter general duty use, laundry carts, bakery racks, food service operations, rolling tool boxes.

SPECIFICATIONS:

SWIVEL:	Ball bearings fixed in hardened single raceway.
FORK:	4"•••3/16" formed steel;
	3"•••1/8" formed steel.
AXLE:	4"•••3/8" diameter bolt and nut;
	3"•••1/4" diameter bolt and nut.
FINISH:	Zinc Plated.



Part #	Description	Packing (PC)	Overall Height (inches)	Weight (LB)	Capacity (LB)
LGS4×1.66R	4"×1 5/8"Rubber Swivel	400	5"	3 1/4	350
LGR4×1.66R	4"×1 5/8"Rubber Rigid	400	5"	2 3/4	350
LGS3×1.25R	3"×1 1/4"Rubber Swivel	800	4"	1 1/4	275
LGR3×1.25R	3"×1 1/4"Rubber Rigid	800	4"	1 1/8	275

